

ANTI-INFLAMMATORY

ANTI-MICROBIAL

HAIR GROWTH PROMOTION

HAIR LOSS PROTECTION

Anti-inflammatory & Anti-microbial

SOPHORA ROOT POWDER

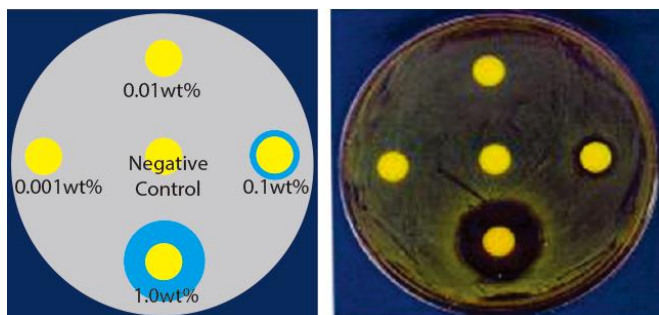
INCI NAME : SOPHORA ANGUSTIFOLIA ROOT EXTRACT / HYDROXYPROPYL CYCLODEXTRIN

GENERAL DESCRIPTION FOR RAW MATERIAL

Sophora angustifolia Sieb. is a green plant with 80~90cm height growing at the sunny places. Because its root has a lot of beneficial active ingredients, it was widely used for the oriental herbal medicine from the past. Especially Sophora extract was traditionally used for the treatment of eczema and dermatitis, and it was also widely used for hair loss protector. Furthermore, Sophora root and whole plant was used for a detoxicant in folk remedy, and it was used for stomachic, invigorant, antiphlogistic, a pain-killer, antifebrile, diuretic in oriental medicine.

EFFICACY

Anti-microbial activity against P.acne by agar diffusion method



SPECIFICATION

Appearance	Yellow brown powder
Odor	Typical
Kurarinone Content	Not Less than 50ppm
Ash content	Not more than 10%
Loss on drying (1g,105°C,3hr)	Not more than 5%
Total bacterial count	Not more than 100cfu/mL
Yeast & molds	Not more than 10cfu/mL

ANTI-INFLAMMATORY

ANTI-MICROBIAL

HAIR GROWTH PROMOTION

HAIR LOSS PROTECTION

TECHNICAL INFORMATION

Processing & Dosage

The recommended dosage of SOPHORA ROOT POWDER is 0.04% ~ 1.0%. SOPHORA ROOT POWDER is a water-soluble active ingredient. In order not to disturb the structure and conformation of the actives, it is recommended to incorporate it into formula at the last phase of the formulation at about 40°C.

Storage & Shelf life

SOPHORA ROOT POWDER should be stored at room temperature in a tightly closed and lightproof package. If stored in these appropriate conditions the shelf life is at least 24 months. Once the original packing is opened, it is highly recommended to use at once.

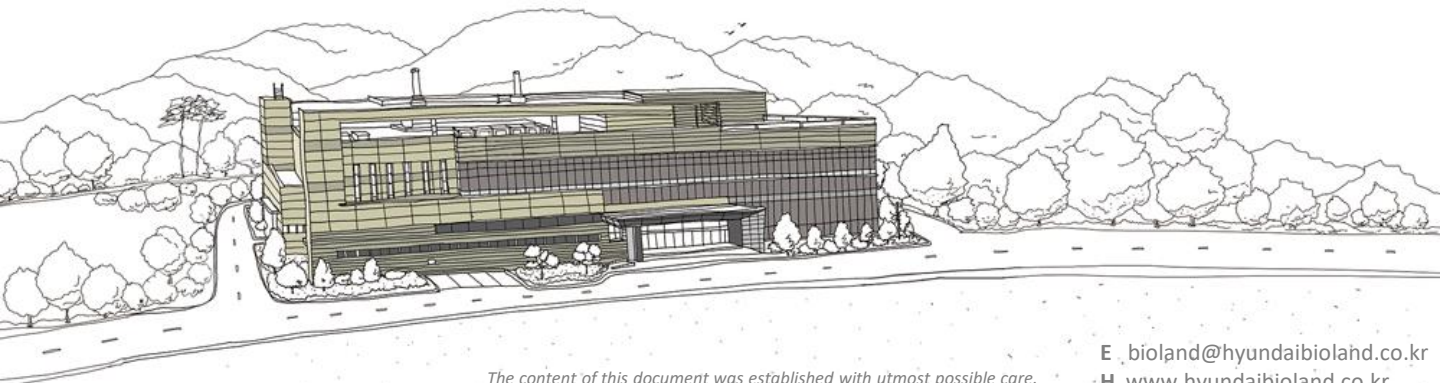
Safety information

As traditional Chinese medicine, sophora root extract is known to use to treat eczema, dermatitis and hair loss. Based on its usage as a medicine, SOPHORA ROOT POWDER is believed as a safe material for cosmetic use.

PRODUCT INFORMATION

TRADE NAME	SOPHORA ROOT POWDER
INCI NAME	COMPOSITION (INCI Key Index)
SOPHORA ANGUSTIFOLIA ROOT EXTRACT	B
HYDROXYPROPYL CYCLODEXTRIN	B
STANDARD PACKAGE	0.5KG

INCI Key Index
A : Greater than 50%
B : Greater than 25% but less than or equal to 50%
C : Greater than 10% but less than or equal to 25%
D : Greater than 5% but less than or equal to 10%
E : Greater than 1% but less than or equal to 5%
F : Greater than 0.1% but less than or equal to 1%
G : Less than or equal to 0.1%



The content of this document was established with utmost possible care. However, we reserve the right to add the information, to correct or to delete it without prior notice.

22 Osongsaengmyeong 2-ro, Osong-eup, Heungdeok-gu, Cheongju-si, Chungcheongbuk-do 28162 KOREA

E : bioland@hyundaibiland.co.kr
H : www.hyundaibiland.co.kr
T : +82-43-249-6720
F : +82-43-249-6709